

*To arrange a viewing contact us
today on 01268 777400*



ASPIRE



ASPIRE



ASPIRE



ASPIRE

New Road, Canvey Island £450,000

Aspire are pleased to present this beautifully maintained and deceptively spacious family home, offering generous living accommodation and a layout perfectly suited to modern day living.

From the moment you step inside, the true size of this home becomes clear. Boasting three reception rooms to the ground floor, along with a separate office or utility space, the property offers excellent flexibility for growing families or those working from home.

The home is presented in move straight in condition, with well proportioned rooms throughout and an abundance of natural light creating a bright and welcoming atmosphere. It is clear that this property has been lovingly cared for, offering a warm and inviting feel that instantly makes you feel at home.

Upstairs continues to impress with well sized bedrooms, including a master with fitted wardrobes and a modern en suite, alongside a contemporary family bathroom.

Externally, the property benefits from a west facing rear garden, ideal for enjoying the afternoon and evening sun, while the garage with electric door and additional workspace adds further practicality.

Positioned in a convenient location, the home is within close proximity to both primary and secondary schools, as well as being just a short distance from Canvey Retail Park, making it perfectly placed for family life.

This is a true family home, ready for its next chapter.

Dining Room

17'1 x 10'3 (5.21m x 3.12m)

Lounge

18'1 x 12'1 (5.51m x 3.68m)

Kitchen

15'8 x 8'3 (4.78m x 2.51m)

Reception Room

14'9 x 9'8 (4.50m x 2.95m)

Downstairs W/C

5'5 x 5'1 (1.65m x 1.55m)

Utility Room / Office

7'6 x 7'2 (2.29m x 2.18m)

Garage

7'6 x 7'2 (2.29m x 2.18m)

Bedroom One

14'6 x 10'3 (4.42m x 3.12m)

Ensuite

7'0 x 5'9 (2.13m x 1.75m)

Bedroom Two

15'1 x 9'4 (4.60m x 2.84m)

Bedroom Three

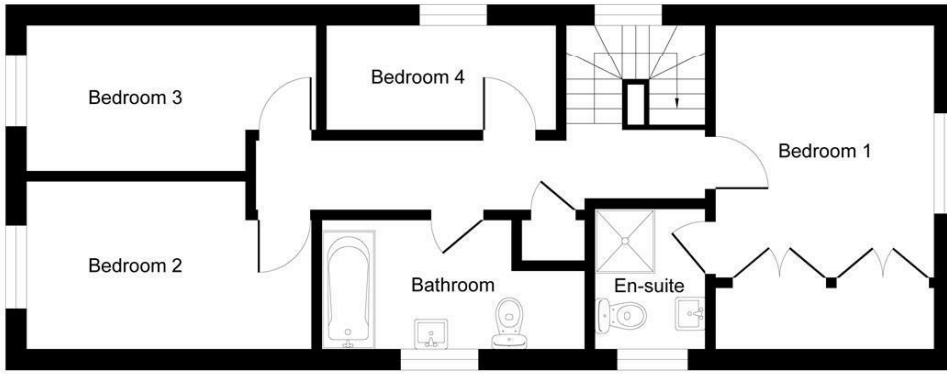
15'1 x 8'4 (4.60m x 2.54m)

Bedroom Four

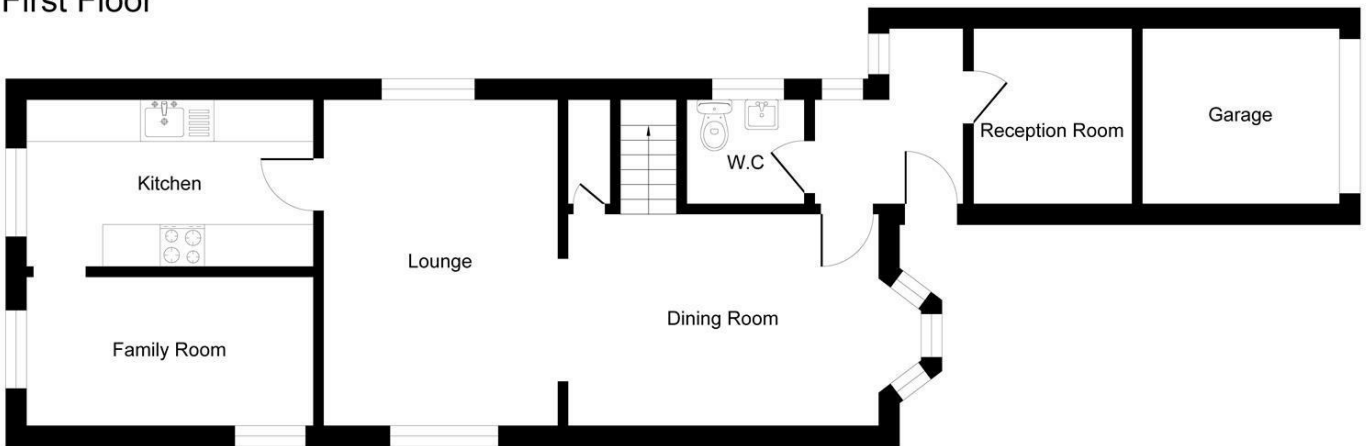
11'3 x 7'3 (3.43m x 2.21m)

Family Bathroom

10'1 x 7'8 (3.07m x 2.34m)

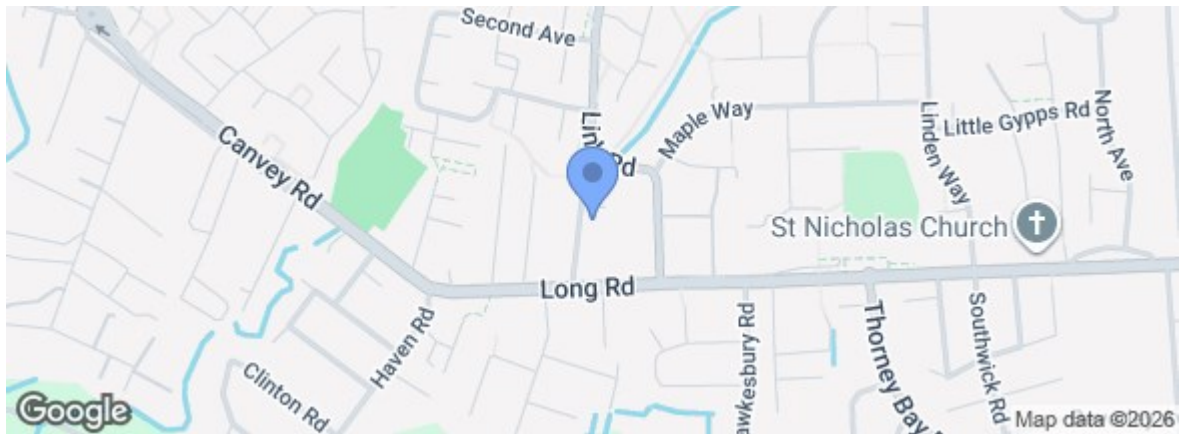


First Floor



Ground Floor

Energy Efficiency Rating		Current	Potential
Very energy efficient - lower running costs			
(92 plus)	A		
(81-91)	B		
(69-80)	C		
(55-68)	D		
(39-54)	E		
(21-38)	F		
(1-20)	G		
Not energy efficient - higher running costs			
England & Wales		EU Directive 2002/91/EC	
Environmental Impact (CO ₂) Rating		Current	Potential
Very environmentally friendly - lower CO ₂ emissions			
(92 plus)	A		
(81-91)	B		
(69-80)	C		
(55-68)	D		
(39-54)	E		
(21-38)	F		
(1-20)	G		
Not environmentally friendly - higher CO ₂ emissions			
England & Wales		EU Directive 2002/91/EC	



Under the Property Misdescriptions Act 1991 we make every effort to ensure our sales details are accurate but they are a general outline and do not constitute any part of an offer or contract. Any services, equipment and fittings have not been tested and no warranty can be given as to their condition. We strongly recommend that all the information provided be verified by your advisors and in particular, measurements required for a specific purpose such as fitted furniture or carpets. Please tell us if you have any problems and members of our branches will help either over the phone or in person. A copy of our complaints procedure is available on request. The details are issued on the strict understanding that any negotiations in respect of the property named herein are conducted through Aspire Estate Agents.